

## FILEMAKER SERVER 11

Get reliable, high-performance access to your critical data!

FileMaker® Server 11 is fast, reliable, easy-to-use server software for groups of FileMaker Pro users that lets you securely share databases over a network, or on the web. With FileMaker Server 11, you can run your databases at peak performance with helpful diagnostic tools, maintain and back up your databases with ease, and get time-saving automation capabilities.

### New in FileMaker Server 11

Get more time saving tools and maintenance enhancements:

- **New!** Enhanced Statistics View  
Get detailed visibility into every FileMaker Pro client on the server to help diagnose potential issues.
- **New!** Backup File Clone  
Save an empty version of your database to help preserve the schema and architecture of your file while troubleshooting your database.
- **New!** Save or Load Schedules  
Automatically save and load your server schedules when migrating to new hardware.
- **New!** Specify User Accounts  
Get the access privileges you need by selecting a specific user account to run system-level scripts.
- **New!** Script Time Limits  
Set optional time limits for script schedules to keep your databases running more efficiently.

### Easy installation and administration

- Basic installations take just 20 minutes or less.
- Manage your databases remotely and automate administrative tasks.
- Run FileMaker Server in a mixed Windows and Mac OS X environment.
- Monitor every FileMaker Pro client on the server to diagnose potential issues.

### 24/7 reliability and availability

- Get anytime access to your data with 24/7 availability.
- Protect your data with scheduled live back-ups.
- Host multiple FileMaker database solutions simultaneously on the network to allow your users to share and update critical information

### Robust scalability

- Connect up to 250 simultaneous FileMaker Pro users.
- Get greater security and network performance for your shared databases.

### Industry-standard security

- Manage user accounts and passwords efficiently through external authentication via industry standard Active Directory and Open Directory.
- Use SSL encryption for secure data transfer.
- Protect sensitive information by filtering the display of hosted database names based on user privileges.

### Custom Web Publishing

- Create custom, data-driven websites using PHP.
- Use the PHP Site Assistant for step-by-step help in creating PHP websites.



Use built-in PHP Site Assistant themes to create visually stunning websites in minutes.

## Minimum Requirements

### Windows†

Windows Server 2008 R2  
 Windows 7 Professional Edition  
 Windows Server 2008 Standard Edition SP2  
 Windows Server 2003 Standard Edition SP2

### Mac†

Mac OS X 10.6 or 10.5.8 (Intel-based Mac)  
 Mac OS X Server 10.6 or 10.5.8 (Intel-based Mac)

### For detailed technical specifications, visit:

[www.filemaker.com/servertechspecs](http://www.filemaker.com/servertechspecs)

† Version stated is the minimum requirement. The software may also work with later versions certified by FileMaker.

## Volume License Purchase Options

FileMaker provides extensive and progressive volume licensing programs that makes it easy for businesses to outfit their workgroups at a reasonable price. To learn more about FileMaker Volume Licensing Programs, contact the FileMaker Volume Licensing Team at: (800) 725-2747.

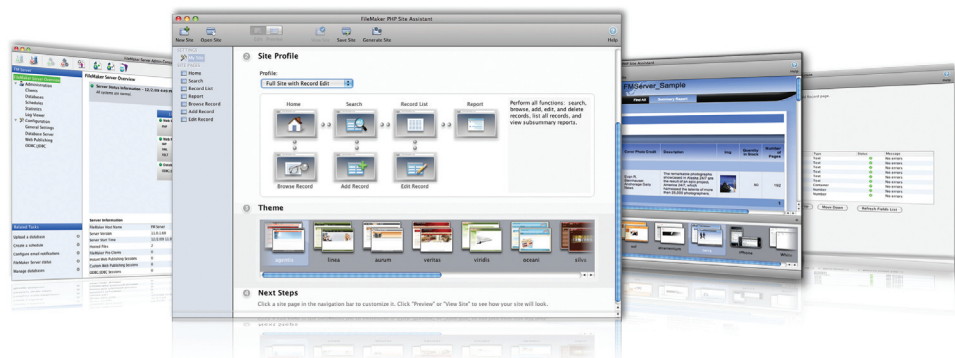
## About FileMaker, Inc.

FileMaker, Inc. offers a complete product line including FileMaker Pro, FileMaker Pro Advanced, FileMaker Server, FileMaker Server Advanced, and Bento. These products provide companies with targeted business solutions that are as comprehensive as they are powerful. The FileMaker Business Alliance includes thousands of solution providers available to assist companies with development needs, customized business solutions, and advanced training. For more information, visit [www.filemaker.com](http://www.filemaker.com).

To order FileMaker, Inc. products within the U.S. and Canada, call (800) 325-2747.

## 10 Reasons why you should use FileMaker Server 10!

- Manage databases remotely from any computer on the network.
- Schedule automatic backups for data protection.
- Automate administrative tasks with the Admin Console.
- Receive email notifications of errors or completed maintenance activities.
- Share with larger groups of users compared to peer-to-peer sharing.
- Centralize your live external SQL connections.
- Publish data to the web using PHP or XSLT.
- Secure data transfers with SSL encryption.
- Use the PHP Site Assistant for step-by-step help in creating PHP websites.
- Manage user access through external authentication via Active Directory/Open Directory.



Fast, reliable, easy-to-use server software for managing your FileMaker Pro databases.



## FileMaker Server 11 Advanced

FileMaker® Server 11 Advanced includes all the features in FileMaker Server 11 plus more sharing and connectivity options. Add FileMaker Server 11 Advanced to FileMaker Pro and maximize your database sharing capabilities, easily and securely.

Feature	FileMaker Server 11	FileMaker Server 11 Advanced	Description
Easy Installation & Administration	✓	✓	Basic installation takes just 20 minutes or less. Manage your databases remotely and automate administrative tasks.
24/7 Reliability & Availability	✓	✓	Get anytime access to your data with 24/7 availability. Protect your data with scheduled live back-ups.
Security	✓	✓	Manage user access through external authentication via Active Directory/Open Directory. Use SSL encryption for secure data transfer.
Custom Web Publishing	✓	✓	Create custom, data-driven websites using PHP. Use the PHP Site Assistant for creating PHP websites.
Sharing	Connect up to 250 users	No limits	<b>NEW!</b> FileMaker Server 11 Advanced technology does not limit the number of FileMaker Pro clients. Technical limits are imposed only by your hardware and operating system.
Administrator Groups		✓	<b>NEW!</b> Create Administrator Groups and assign specific administrative tasks while retaining exclusive control of your server.
Instant Web Publishing		✓	Easily publish and share databases over the web with up to 100 concurrent web users.
ODBC/JDBC Support		✓	Share data with other applications via server-based ODBC/JDBC support. ODBC/JDBC clients can submit SQL queries to FileMaker databases.

